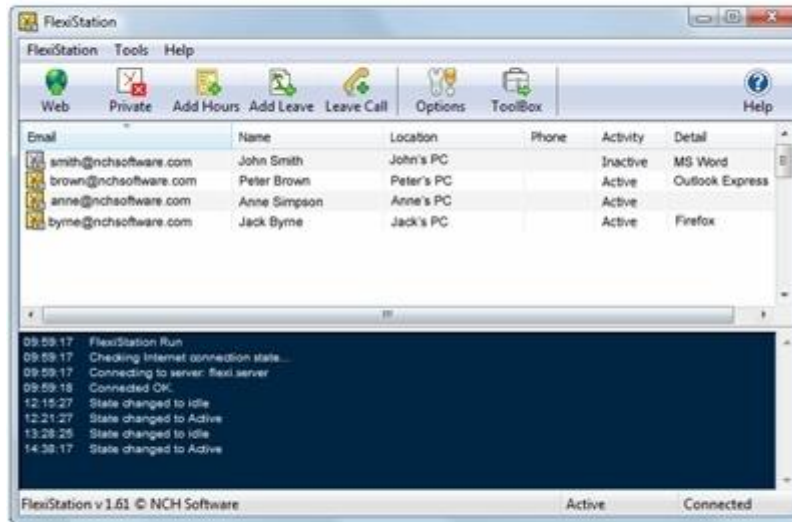


# Flexi Server



[DOWNLOAD HERE](#)

FlexiServer is software for automatic employee time attendance logging. For staff who work at computers it does all hours logging automatically. It records log on and shut down times as worked hours. It automatically detects lunch and other long breaks by monitoring computer idle state. Hours can also be entered manually if the employee is not working at a computer. Flexi-Server works perfectly with home or remote working staff. Flexi Server specifications: Download Size: 3449 KB Other System Requirements: Windows XP/2003/Vista/2008/7 Linux Flexi Server supportSupport email: supportnch@nchsoftware.com Phone: (303) 557-0211 Flexi Server manufacturer NCH Software 6120 Greenwood Plaza Blvd Ste. 12080111 Greenwood Villagenchsoftware.com Tags: employee time software, employee monitoring, time sheet software, time clock software, staff management software, outsourced staff tracking, contract staff tracking, work from home monitori

[DOWNLOAD HERE](#)

## Similar manuals:

[Flexi Server](#)