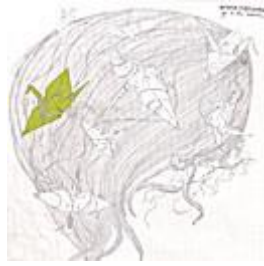


Mp3 Grand Hallway - Yes Is The Answer



[DOWNLOAD HERE](#)

Piano-based art pop with heartfelt vocals, jazzy drums, atmospheric guitars and layered strings. 12 MP3 Songs POP: Piano, POP: Beatles-pop Details: Grand Hallway is a four piece art-pop ensemble from Seattle, Washington. Consisting of Tomo Nakayama (Asahi, Jen Wood Band) on piano and vocals, Erik Neumann (Lillydale, Maldives) on bass, Bob Roberts (Joules, Vermillion) on drums, and Jeramy Koepping (Voyager One) on guitar, the quartet has been making music since the fall of 2005. Equally influenced by Nina Simone, Nick Cave, The Smiths, Jeff Buckley, and Neil Young, Grand Hallway inhabits a richly melodic and deeply personal musical world akin to that of Andrew Bird, Rufus Wainwright, and Antony The Johnsons. Their debut album, Yes Is The Answer was recorded in the summer of 2006 by Koepping and Moe Provencher at Jack Straw Studios. The eleven songs which comprise the album feature Nakayamas instantly memorable melodies, supported by layers of guitars, upright bass, pedal steel, jazzy percussion, and strings (arranged by the band themselves.) Grand Hallways music spans a myriad of genres, often within a single song, all the while evoking a sense of familiarity in its spacious structures and plain spoken words. Yes Is The Answer is released exclusively in Japan on Sideout Records (home to Bright Eyes, Cursive, Nada Surf, The Velvet Teen), and self-released by the band in the US. Grand Hallway will spend the coming months in support of the album, starting with a co-headlining tour of Japan in September with Arthur Yu (Hardly Art Records). Grand Hallway is also writing new material for a planned book/cd collaboration with Japanese artist Heisuke Kitazawa / PCP (Her Space Holiday, The Postal Service), who also created the artwork for Yes Is The Answer. Press Quotes: Like Asahi, Grand Hallway are jaw-droppingly beautiful, but they're also more grandthe compositions are sturdier, the melodies are even more sweeping, and Nakayama's voice feels stronger and more present in the mix of well-crafted orchestras of piano and strings. MEGAN

SELING, THE STRANGER A promising new band with piano pop orchestrations. TOM SCANLON, SEATTLE TIMES The most beautiful singing voice in Seattle. SEAN NELSON, THE STRANGER / HARVEY DANGER Grand Hallway's Tomo Nakayama still has the most heartbreaking voice in local rock. Think Thom Yorke if he'd ever penned a straightforward love song. - RACHEL SHIMP, SEATTLE WEEKLY

[DOWNLOAD HERE](#)

Similar manuals:

[MIDI Keys - Pop Piano](#)

[MP3 Mark Tavenner - Ragtime, Classical, And Pop Piano Music](#)

[MP3 In Color - In Color \(the Lamp Album\)](#)