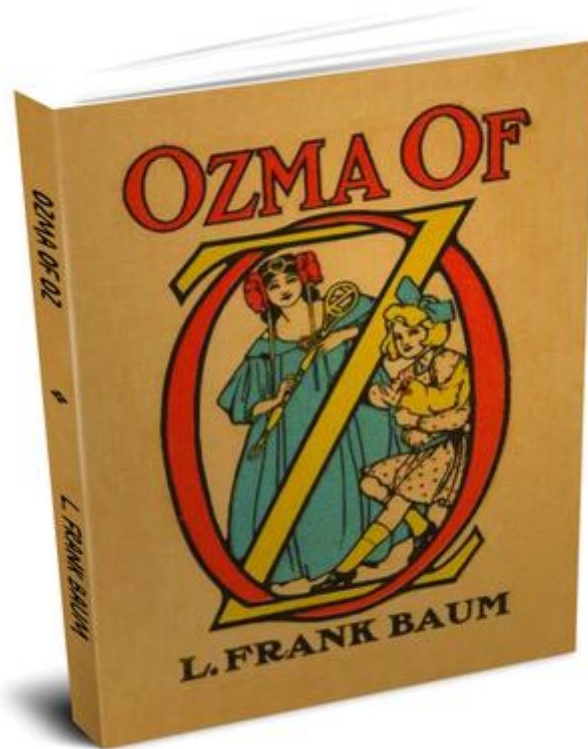


Ozma Of Oz - L. Frank Baum



[DOWNLOAD HERE](#)

Ozma of Oz, published on July 29, 1907, was the third book of L. Frank Baum's Oz series. It was the first in which Baum was clearly intending a series of Oz books. Where at the end of The Wonderful Wizard of Oz, Dorothy's silver shoes were lost in the desert, at the end of Ozma of Oz, Glinda tells her the magic belt she could wish herself home with would likewise be lost, and Dorothy carefully gives it to Princess Ozma, in order that she might go home but the magic still be preserved, and they arrange that Ozma will use it to wish Dorothy back to Oz at need. It is also the first book where the majority of the action takes place outside of the Land of Oz. Only the final two chapters take place in Oz itself. This reflects a subtle change in theme: in the first book, Oz is the dangerous land through which Dorothy must win her way back to Kansas; in the third, Oz is the end and aim of the book. Dorothy's desire to return home is not as desperate as in the first book, and it is her uncle's need for her rather than hers for him that makes her return. It was illustrated throughout in color by artist John R. Neill. The book bore the following dedication: "To all the boys and girls who read my stories - and especially to the Dorothys - this book is lovingly dedicated." Author: Baum, L. Frank Publisher: IndoEuropeanPublishing.com Illustration: N Language:

ENG Title: Ozma of Oz Pages: 00000 (Encrypted PDF) On Sale: 2010-03-24 SKU-13/ISBN:

9781604441710 Category: Juvenile Fiction : Family - General Category: Juvenile Fiction : Action & Adventure - General

[DOWNLOAD HERE](#)

Similar manuals:

[Siesta In The Shade Of A Lion Family](#)

[Baboon Family Botswana](#)

[Lutherstadt Luther Town Eisleben Sachsen-Anhalt Germany Luther Memorial From 1883 By Rudolf Simering Luther Within His Family](#)

[Young Family At The Look Out Point And Look Out Chapel On The Samerberg South Of Rosenheim Upper Bavaria](#)

[Traction Wheel Cabel Car Grimentz Valais Switzerland](#)

[Traction Wheel Cabel Car Grimentz Valais Switzerland](#)

[Symbolic For Adverse Reaction Of Medicaments](#)

[Laughing Snowboard Girl In Action With Waist-high Snow Bulk Saalbach, Austria](#)

[Laughing Snowboard Girl In Action With Waist-high Snow Bulk Saalbach, Austria](#)

[Orchid Family Paphiopedilum](#)

[Family Driving Car](#)

[Family Of Dolls](#)

[Family Of Dolls](#)

[Family Eating In The Garden](#)

[Family Eating In The Garden](#)

[Family Of Dolls](#)

[Puppenfamilie/ Doll Family](#)

[Puppenfamilie/ Doll Family](#)

[Puppenfamilie/ Doll Family](#)

[BRD Germany Bavaria Upper Bavaria Capitol Of Bavaria Odeons Square Hall Of Generals With Lion And The Theatiner Church Towers Of Theatiner Church](#)

[House Of Family Mahlkecht In Front Of Mountain Schlern South Tyrol Italy](#)

[Way Cross And Historic House Of Family Mahlkecht In Village St.Konstantin In South Tyrol Italy](#)

[Ancient Wall Painting In House Of Family Vettii In Excavations Of Pompeii In Italy](#)

[Castle Of Family Scaliger In Sirmione At Lake Of Garda Italy](#)

[Castle Of Family Scaliger With Lemon Orchard Called Limonaia In Torri Del Benaco At Lake Of Garda Italy](#)

[Castles Of Family Of Scaliger Surrounded By Water Of Lake Of Garda Italy](#)

[Greenhouse With Lemontrees Called Limonaia At Castle Of Family Of Scaliger In Torri Del Benaco On Lake Of Garda Italy](#)

[Family With Children On An Excursion In The Nature](#)

[Munich, DEU, 20. May 2005 - Donnersberger Bridge In Munich, On Right Hand Side Is The General Customs Office Visible.](#)

[Family And Money](#)

[Family And Money](#)

[Family](#)

[Family](#)

[Family](#)

[Family](#)

[Family](#)

[Family](#)

[Family](#)

[Family](#)

[Family](#)

[Family](#)

[Family](#)

[Family](#)

[Family](#)

[White Nights, GUS Russia St. Petersburg 300 Years Old Venice Of The North Gate From General Staff Building To The Big Square With Alexander Columnne Built In 1834 By Architect Auguste Montferrand N](#)

[White Nights, GUS Russia St. Petersburg 300 Years Old Venice Of The North Gate From General Staff Building To The Big Square With Alexander Columnne Built In 1834 By Architect Auguste Montferrand N](#)

[White Nights, GUS Russia St. Petersburg 300 Years Old Venice Of The North Gate From General Staff Building To The Big Square With Alexander Columnne Built In 1834 By Architect Auguste Montferrand N](#)

[White Nights, GUS Russia St. Petersburg 300 Years Old Venice Of The North Victory Coach On The Gate General Staff Building To The Big Square](#)

[White Nights, GUS Russia St. Petersburg 300 Years Old Venice Of The North Victory Coach On The Gate Of The General Staff Building To The Big Square With Alexander Columnne Built In 1834 Near Eremit](#)

[White Nights, GUS Russia St. Petersburg 300 Years Old Venice Of The North Victory Coach On The Gate Of The General Staff Building To The Big Square With Alexander Columnne Built In 1834 Near Eremit](#)