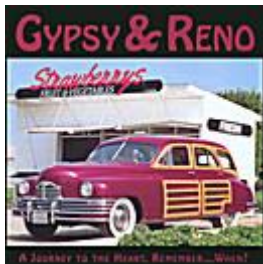


# Mp3 Gypsy Eden - A Journey To The Heart...remember When...?



[DOWNLOAD HERE](#)

retro jazz with a techno take. Torchy Alto vocals, world class singer. VELVET SMOOTH JAZZ VOCALS, NEW ARRANGEMENTS OF EVERGREEN CLASSICS 11 MP3 Songs EASY LISTENING: Crooners/Vocals, JAZZ: Jazz Vocals Details: torchy velvet jazz vocals with high energy techno retro jazz

Remember back to the times of the big bands, the 40's, and the blues? OK, I'm only 22 so I don't either, but I still adore well done musical arrangements of those old classic songs and talented clarinet and sax solos of that general era and genre. Gypsy Reno are just that -- covers of old pre-rock and roll age songs. If you like Natalie Cole's style of covers, blues and band, you aren't too far off. Gypsy Eden's low, rich vocals sound a lot more like Marlena Dietrich. Gypsy Reno don't cover Nat King Cole either, instead you are treated to such classics written by the likes of Duke Ellington, George Gershwin, Jimmy Cox, Joe McCoy, and H. Gillespie. "Cry Me a River", "Embraceable You", "Sophisticated Lady", and "As Time Goes By" are just a few of the wonderful tracks you will hear on this 50+ minute CD. With the lovely vocals, arrangements, and instrument solos, "Journey. . ." is not a bad investment at all.. Reviewed by Shane Matsumoto 6/12/99. OTHER COMMENTS Remember back to the times of the big bands, the 40's, and the blues? OK, I'm only 22 so I don't either, but I still adore well done musical arrangements of those old classic songs and talented clarinet and sax solos of that general era and genre. Gypsy Reno are just that -- covers of old pre-rock and roll age songs. If you like Natalie Cole's style of covers, blues and band, you aren't too far off. Gypsy Eden's low, rich vocals sound a lot more like Marlena Dietrich. Gypsy Reno don't cover Nat King Cole either, instead you are treated to such classics written by the likes of Duke Ellington, George Gershwin, Jimmy Cox, Joe McCoy, and H. Gillespie. "Cry Me a River", "Embraceable You", "Sophisticated Lady", and "As Time Goes By" are just a few of the wonderful tracks you will hear on

this 50+ minute CD. With the lovely vocals, arrangements, and instrument solos, "Journey. . ." is not a bad investment at all.. Reviewed by Shane Matsumoto 6/12/99. OTHER COMMENTS Artist-GYPSY EDEN Genre- Jazz Style- Big Band, Rhythm Blues, Pop Bio- Gypsy Reno are the combined efforts by way of the velvet voice of Gypsy Eden and the engaging musicianship of multi-talented Reno La Grande. Gypsy Eden is originally from St. Louis and is the daughter of the well known guitarist John Brunelli. Gypsy Eden is sought out for her lady crooner's smoky blue-eyed soul style, that takes the listener on a sentimental journey from days of romance past. She finds pleasure in singing of love and love lost, her voice and style are sure to awaken fond memories for many. She warns all to hold on to their heart, get ready to remember and most of all get ready to feel the essence. Gypsy Eden has been described as a "dynamic stylish performer". Reno La Grande is from Rockford Il via Detroit MI and has been teamed up with Gypsy Eden since 1994. Reno La Grande is an accomplished keyboard artist, arranger and composer. Reno La Grande has been classically trained on the piano but is an accomplished musician on many different instruments as he has more then adequately displayed on the 1999 Gypsy Reno debut release, "A Journey to the Heart, Remember... When?". With over twenty-five years of big band experience under his belt, Reno La Grande felt it was time to try his hand at a more personal style of performing. Many have described him as a polished performer and together with Gypsy Eden, they combine into what many call a nova-like performance. Which is two bright stars combining talents, creating performances of intense and unique quality. In the year 2000 Gypsy Reno could be found performing and promoting their CD, in and around the Tampa Bay area in Florida. Larry Belanger (AMG) [summitartists.com/gypsy&reno/](http://summitartists.com/gypsy&reno/) GYPSY EDEN A Journey to the Heart. . . Remember When? MEDIA: CD. 1-800-buy-mycd . CONTACT: GYPSY EDEN, Novaquantum Records, e mail [gypsyrose99992003@yahoo](mailto:gypsyrose99992003@yahoo) Search for Gypsy EDEN at 1000's of music sellers worldwide! Remember back to the times of the big bands, the 40's, and the blues? OK, I'm only 22 so I don't either, but I still adore well done musical arrangements of those old classic songs and talented clarinet and sax solos of that general era and genre. Gypsy Reno are just that -- covers of old pre-rock and roll age songs. If you like Natalie Cole's style of covers, blues and band, you aren't too far off. Gypsy Eden's low, rich vocals sound a lot more like Marlena Dietrich. Gypsy Reno don't cover Nat King Cole either, instead you are treated to such classics written by the likes of Duke Ellington, George Gershwin, Jimmy Cox, Joe McCoy, and H. Gillespie. "Cry Me a River", "Embraceable You", "Sophisticated Lady", and "As Time Goes By" are

just a few of the wonderful tracks you will hear on this 50+ minute CD. With the lovely vocals, arrangements, and instrument solos, "Journey. . ." is not a bad investment at all.. Reviewed by Shane Matsumoto 6/12/99. OTHER COMMENTS [summitartists.com/gypsy&reno/](http://summitartists.com/gypsy&reno/) REVIEW A Journey to the Heart, Remember... When? Track 1- Cry Me A River On this tune the effects on the vocals work well to add depth to the melody. A solid rhythm section gives a strong foundation that allows for some expansion on the keyboard. The Blues Jazz feel compliments Gypsy Eden's sultry vocal style. (!!!!) Track 2- For The Good Times This Kris Kristoferson cover comes off with a superior presentation with some great harmony vocals. The groove of the melody takes on a country jazz quality, which lends the tune an excellent dance beat. The accentuations from the piano are some of the sweetest chops ever used to color a piece. (!!!!) Track 3- Misty The unique style that Gypsy Reno bring to this cover helps turn a classic into a sparkling new gem. They spice up the melody, both instrumentally and with a seductive vocal style, giving the tune a much more defined Jazz essence. (!!!!) Track 4- Nobody Knows You When You're Down and Out On this tune the clarinet helps give the song a New Orleans charm that fits well with the Gypsy Reno Jazz style. Gypsy Eden's vocals are extremely soulful which gives the listener the impression that she is really into her performance. (!!!!) Track 5- Embraceable You On this tune one may think that they have heard this tune done in every imaginable way, but that could not be further from the truth. Gypsy Reno breath a new life into this classic with their insatiable desire to spice up a melody with their knowledge of the right Jazz accentuations. (!!!!) Track 6- Still Got The Blues The romantic groove on this tune has the magnetism that makes one want to get up and sway with the beat. As Gypsy Eden croons out the emotion filled lyrics and Reno LaGrande colors the melody with his creative artistic manifestations one gets drawn into their musical masterpiece. (!!!!) Track 7- Why Don't You Do Right Even though this tune has a rocking drum track the melody still manages to engage a Jazz feel. The reason for this is the powerful presence of Gypsy Eden's vocals, which are finely blended with the instrumental Jazz accents incorporated into the formula by Reno LaGrande. (!!!!) Track 8- You Go To My Head So many will be transported back in time through the powerful period feel of this tune. The strength in the melody goes back to an era where music had character in the arrangement that gave off a romantic groove, similar to the soul music that was still to come. Gypsy Reno has a knack for giving a cover a unique charisma, that is as vibrant as the scent of Spring flowers. (!!!!) Track 9- Your Red Wagon This tune incorporates more of a swing beat that has a strong bass drive. The energy level

does not reach an intensity that it should, this is one arrangement that needs some attention. The vocals do not blend with the music as well as on other songs, it's as if the vocals were done before the music was set up. ( !!! ) Track 10- Sophisticated Lady On this tune Gypsy Reno are back into the groove with more of a structured presentation. The music from the keyboard and brass now accentuate the vocals.

While the rhythm section leaves room for expansion into the improvisational Jazz solos, that are key attractions to their style. ( !!!!! ) Track 11- As Time Goes By Gypsy Reno close the album with a beautiful version of this classic cover tune. The talented piano playing makes a lovely back-drop for the sultry crooning that masterfully colors the melody. ( !!!!! ) Larry's overall impression- This album by

Gypsy Reno may at first glance appear to be a bunch of cover tunes done by any of the many Lounge acts. One listen from any cut on the album will dispel that theory very quickly. When Gypsy Reno lay down their powerful Jazz groove to any of the the melodies of these familiar tunes, they rapidly turn even a dire skeptic into another fan. Gypsy Reno could very well be a Lounge act, but it would certainly be a Lounge that would have seating for a sizable crowd. They have a unique feel for turning cover tunes into a sound that is very much their own. One has to wonder what some of their original arrangements would sound like. Hopefully Gypsy Reno will bless their fans with an album of original pieces, but until then all can sit back and Remember... When! Until next time keep your ears to the tunes, your eyes on the road and keep in touch with us. Larry GYPSY EDEN PO Box 1352 mango fl 33550 Cyber Connections

gypsyrose99992003@yahoo.com Order GYPSY EDEN CD Here 1-800-BUY-MYCD Email gypsy eden gypsyrose99992003@yahoo.com AS OF SEPT 2004 GYPSY EDEN IS SEARCHING FOR A NEW MUSIC PARTNER. ANOTHER " RENO", AS GYPSY OWNS NQ RECORDS AND THE TRADENAME GYPSY RENO. SEEKING PRO KEYBOARD,/ PIANO, JAZZ GUITAR, SAX. WE HAVE TOP GIGS IN TOP PLACES. PLEASE BE FREE TO TRAVEL. NO EGOS, CHECK THEM AT THE DOOR. WE ARE SERIOUS VEGAS TRAINED MUSICIANS, ON A ONE-WAY-TRIP-TO-THE-STARS... CONTACT GYPSY EDEN AT gypsyrose99992003@yahoo.com WE WILL BE RECORDING A NEW ALBUM, SO BRING YOUR SONGS. -----

----- REVIEW A Journey to the Heart, Remember... When? Track 1- Cry Me A River On this tune the effects on the vocals work well to add depth to the melody. A solid rhythm section gives a strong foundation that allows for some expansion on the keyboard. The Blues Jazz feel compliments Gypsy Eden's sultry vocal style. ( !!!!! ) Track 2- For

The Good Times This Kris Kristoferson cover comes off with a superior presentation with some great harmony vocals. The groove of the melody takes on a country jazz quality, which lends the tune an excellent dance beat. The accentuations from the piano are some of the sweetest chops ever used to color a piece. ( ! ! ! ! ! )

Track 3- Misty The unique style that Gypsy Reno bring to this cover helps turn a classic into a sparkling new gem. They spice up the melody, both instrumentally and with a seductive vocal style, giving the tune a much more defined Jazz essence. ( ! ! ! ! ! )

Track 4- Nobody Knows You When You're Down and Out On this tune the clarinet helps give the song a New Orleans charm that fits well with the Gypsy Reno Jazz style. Gypsy Eden's vocals are extremely soulful which gives the listener the impression that she is really into her performance. ( ! ! ! ! ! )

Track 5- Embraceable You On this tune one may think that they have heard this tune done in every imaginable way, but that could not be further from the truth. Gypsy Reno breath a new life into this classic with their insatiable desire to spice up a melody with their knowledge of the right Jazz accentuations. ( ! ! ! ! ! )

Track 6- Still Got The Blues The romantic groove on this tune has the magnetism that makes one want to get up and sway with the beat. As Gypsy Eden croons out the emotion filled lyrics and Reno LaGrande colors the melody with his creative artistic manifestations one gets drawn into their musical masterpiece. ( ! ! ! ! ! )

Track 7- Why Don't You Do Right Even though this tune has a rocking drum track the melody still manages to engage a Jazz feel. The reason for this is the powerful presence of Gypsy Eden's vocals, which are finely blended with the instrumental Jazz accents incorporated into the formula by Reno LaGrande. ( ! ! ! ! ! )

Track 8- You Go To My Head So many will be transported back in time through the powerful period feel of this tune. The strength in the melody goes back to an era where music had character in the arrangement that gave off a romantic groove, similar to the soul music that was still to come. Gypsy Reno has a knack for giving a cover a unique charisma, that is as vibrant as the scent of Spring flowers. ( ! ! ! ! ! )

Track 9- Your Red Wagon This tune incorporates more of a swing beat that has a strong bass drive. The energy level does not reach an intensity that it should, this is one arrangement that needs some attention. The vocals do not blend with the music as well as on other songs, it's as if the vocals were done before the music was set up. ( ! ! ! )

Track 10- Sophisticated Lady On this tune Gypsy Reno are back into the groove with more of a structured presentation. The music from the keyboard and brass now accentuate the vocals. While the rhythm section leaves room for expansion into the improvisational Jazz solos, that are key attractions to their style. ( ! ! ! ! ! )

Track 11- As Time Goes By Gypsy Reno close the album with a

beautiful version of this classic cover tune. The talented piano playing makes a lovely back-drop for the sultry crooning that masterfully colors the melody. (!!!!) Larry's overall impression- This album by Gypsy Reno may at first glance appear to be a bunch of cover tunes done by any of the many Lounge acts. One listen from any cut on the album will dispel that theory very quickly. When Gypsy Reno lay down their powerful Jazz groove to any of the the melodies of these familiar tunes, they rapidly turn even a dire skeptic into another fan. Gypsy Reno could very well be a Lounge act, but it would certainly be a Lounge that would have seating for a sizable crowd. They have a unique feel for turning cover tunes into a sound that is very much their own. One has to wonder what some of their original arrangements would sound like. Hopefully Gypsy Reno will bless their fans with an album of original pieces, but until then all can sit back and Remember... When! Until next time keep your ears to the tunes, your eyes on the road and keep in touch with us. Larry Snail Mail po box 1352 mango fl 33550 Cyber Connections gypsyrose99992003@yahoo.com Order TheGYPSY EDEN CD Here 1-800-BUY-MYCD Downeast

Reviews PO Box 703 Sabattus ME 04280 REVIEW A Journey to the Heart, Remember... When? Track 1- Cry Me A River On this tune the effects on the vocals work well to add depth to the melody. A solid rhythm section gives a strong foundation that allows for some expansion on the keyboard. The Blues Jazz feel compliments Gypsy Eden's sultry vocal style. (!!!!) Track 2- For The Good Times This Kris Kristoferson cover comes off with a superior presentation with some great harmony vocals. The groove of the melody takes on a country jazz quality, which lends the tune an excellent dance beat. The accentuations from the piano are some of the sweetest chops ever used to color a piece. (!!!!) Track 3- Misty The unique style that Gypsy Reno bring to this cover helps turn a classic into a sparkling new gem. They spice up the melody, both instrumentally and with a seductive vocal style, giving the tune a much more defined Jazz essence. (!!!!) Track 4- Nobody Knows You When You're Down and Out On this tune the clarinet helps give the song a New Orleans charm that fits well with the Gypsy Reno Jazz style. Gypsy Eden's vocals are extremely soulful which gives the listener the impression that she is really into her performance. (!!!!) Track 5- Embraceable You On this tune one may think that they have heard this tune done in every imaginable way, but that could not be further from the truth. Gypsy Reno breath a new life into this classic with their insatiable desire to spice up a melody with their knowledge of the right Jazz accentuations. (!!!!) Track 6- Still Got The Blues The romantic groove on this tune has the magnetism that makes one want to get up and sway with the beat. As Gypsy Eden croons out the

emotion filled lyrics and Reno LaGrande colors the melody with his creative artistic manifestations one gets drawn into their musical masterpiece. (!!!!) Track 7- Why Don't You Do Right Even though this tune has a rocking drum track the melody still manages to engage a Jazz feel. The reason for this is the powerful presence of Gypsy Eden's vocals, which are finely blended with the instrumental Jazz accents incorporated into the formula by Reno LaGrande. (!!!!) Track 8- You Go To My Head So many will be transported back in time through the powerful period feel of this tune. The strength in the melody goes back to an era where music had character in the arrangement that gave off a romantic groove, similar to the soul music that was still to come. Gypsy Reno has a knack for giving a cover a unique charisma, that is as vibrant as the scent of Spring flowers. (!!!!) Track 9- Your Red Wagon This tune incorporates more of a swing beat that has a strong bass drive. The energy level does not reach an intensity that it should, this is one arrangement that needs some attention. The vocals do not blend with the music as well as on other songs, it's as if the vocals were done before the music was set up. (!!!) Track 10- Sophisticated Lady On this tune Gypsy Reno are back into the groove with more of a structured presentation. The music from the keyboard and brass now accentuate the vocals. While the rhythm section leaves room for expansion into the improvisational Jazz solos, that are key attractions to their style. (!!!!) Track 11- As Time Goes By Gypsy Reno close the album with a beautiful version of this classic cover tune. The talented piano playing makes a lovely back-drop for the sultry crooning that masterfully colors the melody. (!!!!) Larry's overall impression- This album by Gypsy Reno may at first glance appear to be a bunch of cover tunes done by any of the many Lounge acts. One listen from any cut on the album will dispel that theory very quickly. When Gypsy Reno lay down their powerful Jazz groove to any of the the melodies of these familiar tunes, they rapidly turn even a dire skeptic into another fan. Gypsy Reno could very well be a Lounge act, but it would certainly be a Lounge that would have seating for a sizable crowd. They have a unique feel for turning cover tunes into a sound that is very much their own. One has to wonder what some of their original arrangements would sound like. Hopefully Gypsy Reno will bless their fans with an album of original pieces, but until then all can sit back and Remember... When! Until next time keep your ears to the tunes, your eyes on the road and keep in touch with us. Larry Order The Gypsy Reno CD Here 1-800-BUY-MYCD Email Gypsy Reno gypsyrose99992003@yahoo.com -----

[DOWNLOAD HERE](#)

Similar manuals: