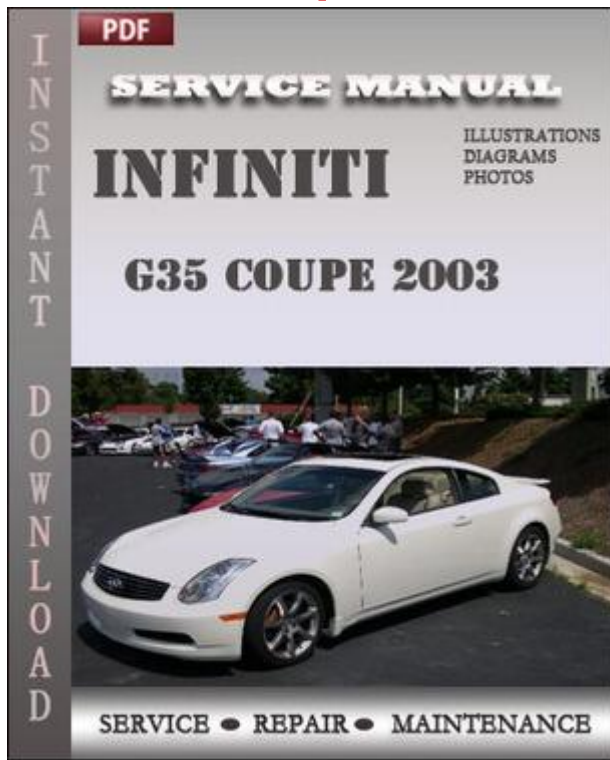


Infiniti G35 Coupe 2003 Service Repair Manual



[DOWNLOAD HERE](#)

This service manual contains maintenance and repair procedures for Infiniti G35 Coupe 2003. This manual is specifically written for the do-it-yourselfer as well as the experienced mechanic. It provides step-by-step instructions based on the complete disassembly of the machine. It is this level of detail, along with hundreds of photos and illustrations, that guide you through each service and repair procedure. This is not a scanned service repair manual. More manuals at:

digitalservicemanuals.tradebit.com/files.php/1003-Documents-eBooks-Technical THIS MANUAL

CONTAINS: -general information -engine mechanical -engine lubrication system -engine cooling system -engine control system -fuel system -exhaust system -starting system -accelerator control system -transaxle and transmission -driveline -front axle -rear axle -front suspension -rear suspension -road wheels and tires -brake system -parking brake system -brake control system -steering system -steering control system -seat belt -srs airbag -srs airbag control system -ventilation system -heater and air conditioning system -heater and air conditioning control system -interior -instrument panel -seat -automatic drive positioner -door and lock -security control system -glass and window system -power window control system -roof -exterior -body repair -mirrors -exterior lighting system -interior lighting

system -wiper and washer -defogger -horn -power outlet -body control system -lan system -power control system -charging system -power supply,ground and circuit elements -meter,warning lamp and indicator -warning chime system -sonar system -audio,visual and navigation system -cruise control system -maintenance Language: English Printable: Yes File Format: PDF Compatibility: WINDOWS and MAC Requirements: Adobe PDF Reader

[DOWNLOAD HERE](#)

Similar manuals:

[2011 INFINITI G COUPE FACTORY SERVICE MANUAL](#)

[2012 INFINITI G COUPE FACTORY SERVICE MANUAL](#)

[2013 INFINITI G COUPE FACTORY SERVICE MANUAL](#)