

Sea King 3.5 4 6 9.2 Hp Outboard Service Repair Manual 78-84

See OLDWILLWAYNE on Ebay for all your manual needs
Sea King 3.5 & 4 HP

OUTBOARD MOTOR

SEA KING 3.5 AND 4 HP

Year Produced	3.5 hp	4 hp
1978	52004
1979	52004A
1980	52004B
1981	52003	52004C
1982	52004D
1983	52004
1984	52004

CONDENSED SERVICE DATA

TUNE-UP

Hp/rpm	3.5/4500
	4/5250
Bore - Inches	2
Stroke - Inches	1-19/32
Number of Cylinders	1
Displacement - Cu. In.	5.0
Compression at Cranking Speed (Average, with recoil starter)	110-125 psi
Spark Plug:	
Champion	L86
Electrode gap	0.030
Magneto:	
Breaker point gap	0.020 in.
Fuel-Oil Ratio	50:1

TIGHTENING TORQUES

(All Values in Inch-Pounds)	
Connecting Rod	75-85
Cylinder Head	130
Flywheel nut	204
Main Bearing Bolts	70
Spark Plug	120-180
Standard Screws:	
6-32	9
10-24	30
10-32	35
12-24	45
1/4-20	70
5/16-18	160
3/8-16	270

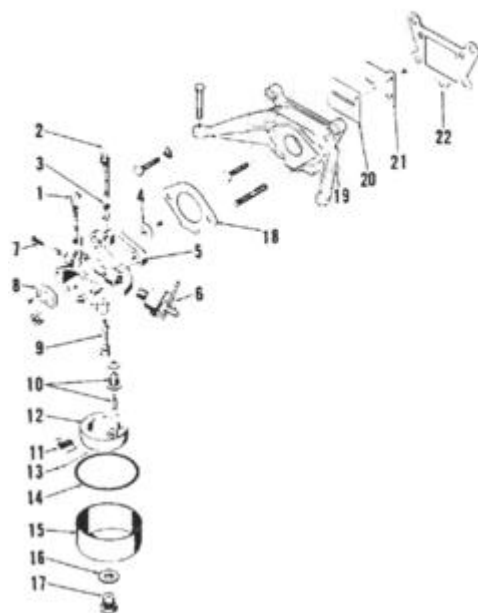


Fig. SK6-1 - Exploded view of carburetor.

1. Choke shaft
2. Throttle shaft
3. Spring
4. Throttle plate
5. Carb. body
6. Fuel valve
7. Idle mixture screw
8. Choke plate
9. Nozzle
10. Fuel inlet valve
11. Float spring
12. Float
13. Float pin
14. Gasket
15. Float bowl
16. Washer
17. High speed jet
18. Gasket
19. Intake manifold
20. Reed petals
21. Reed stop
22. Gasket

LUBRICATION

The power head is lubricated by oil mixed with the fuel. One-sixth (1/6) pint of two-stroke engine oil should be mixed with each gallon of gasoline. Manufacturer recommends use of no-lead automotive gasoline although regular or premium grade gasoline may be used if octane rating is 85 or higher. Gasoline and oil should be thoroughly mixed.

The lower unit gears and bearings are lubricated by oil contained in the gearcase. Manufacturer recommends Chrysler Outboard Gear Lube for use in gearcase. The gearcase should be drained and refilled every 100 hours or once each year, and fluid maintained at the level of the upper (vent) plug hole.

FUEL SYSTEM

CARBURETOR. Refer to Fig. SK6-1 for an exploded view of carburetor. Initial setting of idle mixture screw (7) is one turn open. High speed mixture is controlled by high speed jet (17). Adjust idle speed so engine idles at 800-1200 rpm.

[DOWNLOAD HERE](#)

This listing is for 1 Sea King outboard motor digital service /repair manual This is a service / repair manual in pdf format. It covers Montgomery Wards Sea King OUTBOARDS from the 1978 to 1984. It

covers 3.5, 4, 6, 9.2 HP engines overhaul, maintenance, specs, lower units, troubleshooting, fuel and ign systems and more. These are the Chrysler built engine in the 70s-80s. It is fully illustrated

[DOWNLOAD HERE](#)

Similar manuals:

[Sea King 35 45 55 HP Outboard Service Repair Manual 69-80](#)

[Sea King 3.5 4 6 9.2 HP Outboard Service Repair Manual 78-84](#)

[Sea King 9.6 -15 HP Outboard Service Repair Manual 70-84](#)

[Mercury Outboard 2-40 Service Repair Manual 1965-89](#)

[Mercury Outboard 40-115 Service Repair Manual 1965-89](#)

[Force Outboard Motor 4-150 Service Repair Manual 84-99](#)

[Evinrude Outboard Professional Service Manual 1949-1954](#)

[1984 Yamaha 5 HP Outboard Service Repair Manual ..](#)

[1984 Yamaha 2 HP Outboard Service Repair Manual ..](#)

[1984 Yamaha 200 HP Outboard Service Repair Manual Service Repair Manual](#)

[1984 Yamaha 25 HP Outboard Service Repair Manual](#)

[1984 Yamaha 30 HP Outboard Service Repair Manual](#)

[1984 Yamaha 4 HP Outboard Service Repair Manual ..](#)

[1984 Yamaha 40 HP Outboard Service Repair Manual ..](#)

[1984 Yamaha 70 HP Outboard Service Repair Manual](#)

[1984 Yamaha 8 HP Outboard Service Repair Manual](#)

[1984 Yamaha 9.9 HP Outboard Service Repair Manual](#)

[1984 Yamaha 90 HP Outboard Service Repair Manual..](#)

[1985 Yamaha 15 HP Outboard Service Repair Manual](#)

[1985 Yamaha 150 HP Outboard Service Repair Manual](#)

[1985 Yamaha 175 HP Outboard Service Repair Manual](#)

[1985 Yamaha 2 HP Outboard Service Repair Manual](#)

[1985 Yamaha 25 HP Outboard Service Repair Manual](#)

[1985 Yamaha 30 HP Outboard Service Repair Manual](#)

[1985 Yamaha 4 HP Outboard Service Repair Manual](#)

[1985 Yamaha 40 HP Outboard Service Repair Manual](#)

[1985 Yamaha 5 HP Outboard Service Repair Manual](#)

[1985 Yamaha 70 HP Outboard Service Repair Manual](#)

[1985 Yamaha 8 HP Outboard Service Repair Manual](#)

[1985 Yamaha 9.9 HP Outboard Service Repair Manual](#)

[1985 Yamaha 90 HP Outboard Service Repair Manual](#)

[1985 Yamaha FT9.9 HP Outboard Service Repair Manual](#)

[1986 Yamaha 15 HP Outboard Service Repair Manual](#)

[1986 Yamaha 150 HP Outboard Service Repair Manual Service Repair Manual](#)

[1986 Yamaha 175 HP Outboard Service Repair Manual Service Repair Manual](#)

[1986 Yamaha 2 HP Outboard Service Repair Manual](#)

[1986 Yamaha 200 HP Outboard Service Repair Manual Service Repair Manual](#)

[1986 Yamaha 25 HP Outboard Service Repair Manual](#)

[1986 Yamaha 30 HP Outboard Service Repair Manual](#)

[1986 Yamaha 4 HP Outboard Service Repair Manual ..](#)

[1986 Yamaha 4 HP Outboard Service Repair Manual ..](#)

[1986 Yamaha 40 HP Outboard Service Repair Manual](#)

[1986 Yamaha 50 HP Outboard Service Repair Manual](#)

[1986 Yamaha 6 HP Outboard Service Repair Manual](#)

[1986 Yamaha 70 HP Outboard Service Repair Manual](#)

[1986 Yamaha 8 HP Outboard Service Repair Manual](#)

[1986 Yamaha 9.9 HP Outboard Service Repair Manual](#)

[1986 Yamaha 90 HP Outboard Service Repair Manual](#)

[1986 Yamaha FT9.9 HP Outboard Service Repair Manual](#)

[1987 Yamaha 115 HP Outboard Service Repair Manual](#)